



What It Takes to Sustain Government-led Scale-Up of FP/AYSRRH Programs

Graduation Experiences in East Africa

TCI Envisions

A world where young people, women and men are empowered to live an optimal reproductive life by supporting local governments to rapidly and sustainably scale up proven high impact reproductive health solutions in urban poor settlements.



Our Footprint

- ▶ Busia*
- ▶ Buikwe
- ▶ Iganga
- ▶ Mukono*
- ▶ Kampala City
- ▶ Wakiso
- ▶ Kabarole**
- ▶ Lira**



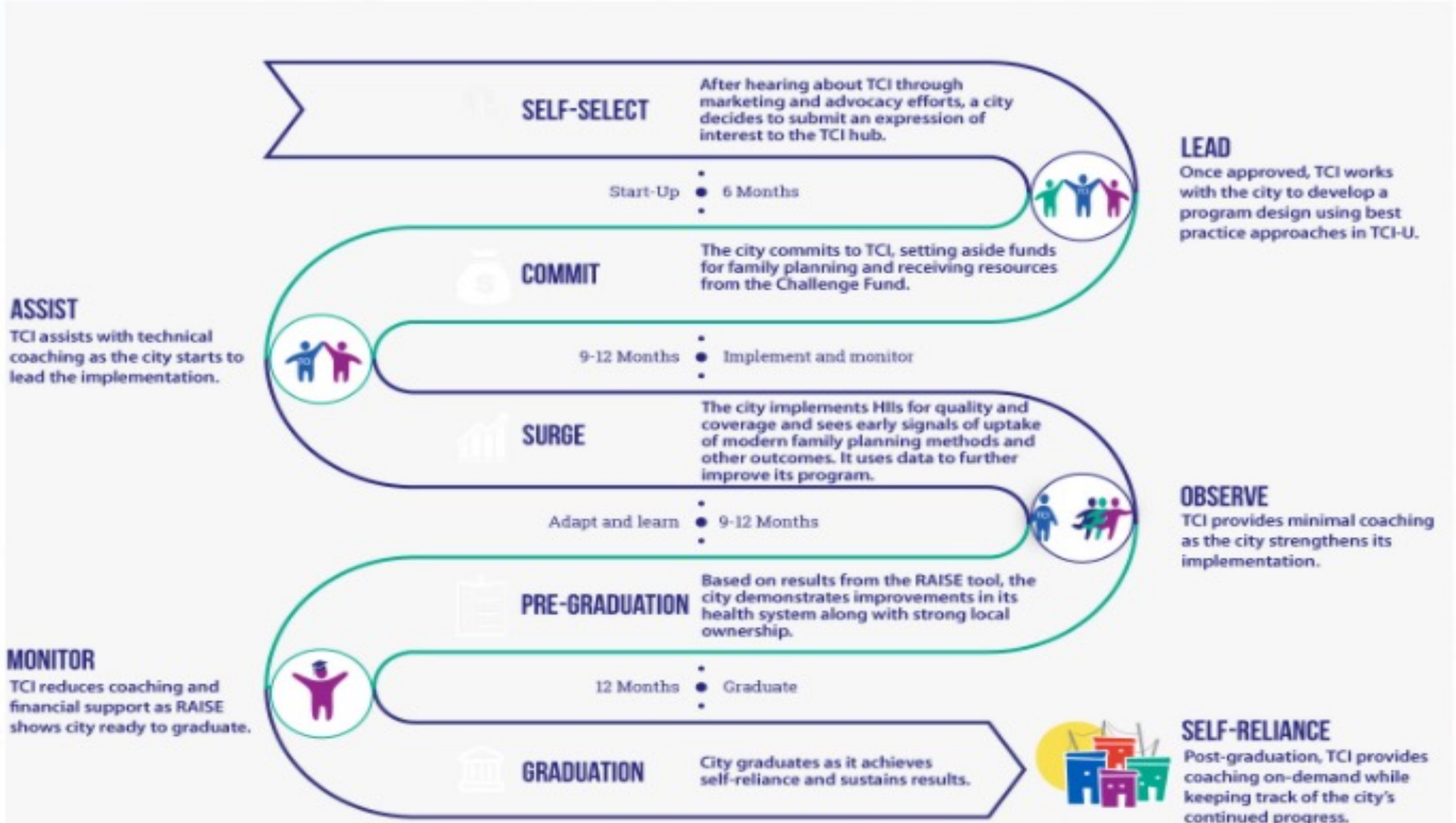
- ▶ Kericho*
- ▶ Kilifi
- ▶ Migori
- ▶ Mombasa
- ▶ Nairobi
- ▶ Uasin Gishu*
- ▶ Nyamira
- ▶ Vihiga**

- ▶ Dodoma**
- ▶ Ilala*
- ▶ Kigamboni
- ▶ Kinondoni
- ▶ Temeke*
- ▶ Ukerewe
- ▶ Ilemela
- ▶ Nyamagana
- ▶ Ubungo
- ▶ Arusha
- ▶ Arusha
- ▶ Tanga

Graduated cities*
New cities**



The City's Journey to Graduation



Graduation in the TCI Context

Process of a government's transition towards self-reliance, whereby a city successfully and sustainably implements its FP/AYSRH best practice approaches and achieves positive results on their health outcomes.

- Graduation is **not** an exit strategy
- Graduation is a continuum whereby cities transition to a modified level of support.
- Graduation from one health area does not mean a city won't continue in other health areas.
- Building local government capacity to be able to work with other donors and in other health areas – no one left behind or abandoned



Graduation Phases

The cities can be in any of the following stages:

- Start up (*up to 6 months*)
- Surge (*2 years*)
- Pre-graduation (*up to 1 year*)
- Post-graduation



Illustrative lifespan for city engagement with TCI

Graduation Criteria

- Informed by both qualitative and quantitative measure
- Completed 3 rounds of RAISE and shared with city leadership
- Performance data from the health information system (HMIS)
- Expected engagement period with TCI
- Availability of champions + resource teams that will facilitate implementation post
- Coaching structure in place

Geography	Check	Notes / Action Items
Performance		
• 3 rounds of RAISE completed and results shared with PITs and technical leadership.	[]	
• HMIS and other positive (or negative) performance results leading to graduation decisions discussed with geography health teams	[]	
• Graduation / post-graduation activities and timeline for graduating geography identified, planned (and budgeted for)	[]	
• TCI focal person/PIT has identified champion(s) or resource team ? that will facilitate implementation of activities, coaching, and/or monitoring during graduation	[]	
• Process for obtaining ad hoc / light TA discussed and agreed upon with geography leadership	[]	
Communication		
• Meeting with top leadership of geography held to discuss Tupange Pamoja Graduation strategy/ criteria / decisions	[]	
• Tupange Pamoja Graduation strategy/ criteria/ decisions shared with PIT team (graduation briefs etc.)	[]	
• Hub and GI aware of country/geography graduation decisions	[]	
• Communication done with other FP partners on TCI's graduation plan/post-graduation	[]	

Key Considerations for Graduation

- Ensure clear expectations about graduation from the onset.
- Graduation is a process that starts from surge to pre-graduation, moving to post-graduation.
- Average of 3 years in a geography before initiating graduation.
- Triangulate data (qualitative and quantitative) to identify potential geographies for graduation.
- Monitor graduation and post-graduation performance.



Meet the Presenters



Wamaena Dick

Member of Busia
District Health
Management Team,
Uganda



Sr Rehema Panga

Municipal
Reproductive & Child
Health Coordinator,
Ubungu Municipal
Council, Tanzania

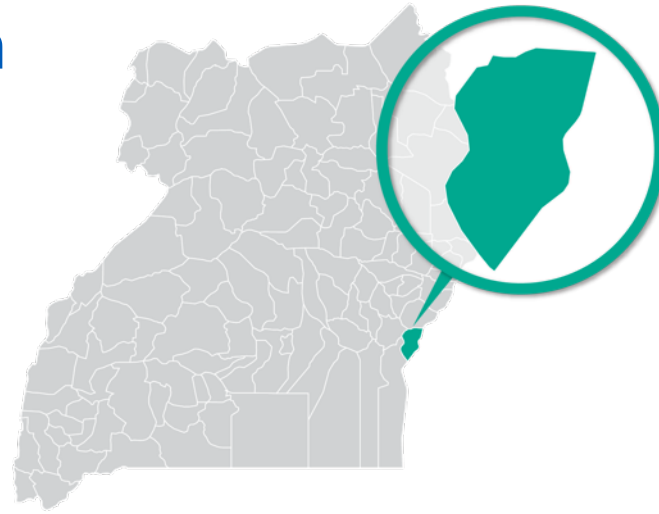


Assumpta Matekwa

TCI County Manager,
Vihiga, Kericho & Uasin
Gishu, Kenya

Busia District - Uganda

Busia was one of the first cities to graduate in Uganda



Key achievements since joining TCI include:

1

Dedicated budget line for family planning

3

Active FP & AYSRH champions supporting advocacy activities

5

Adaptation of the high-impact interventions within the district workplans

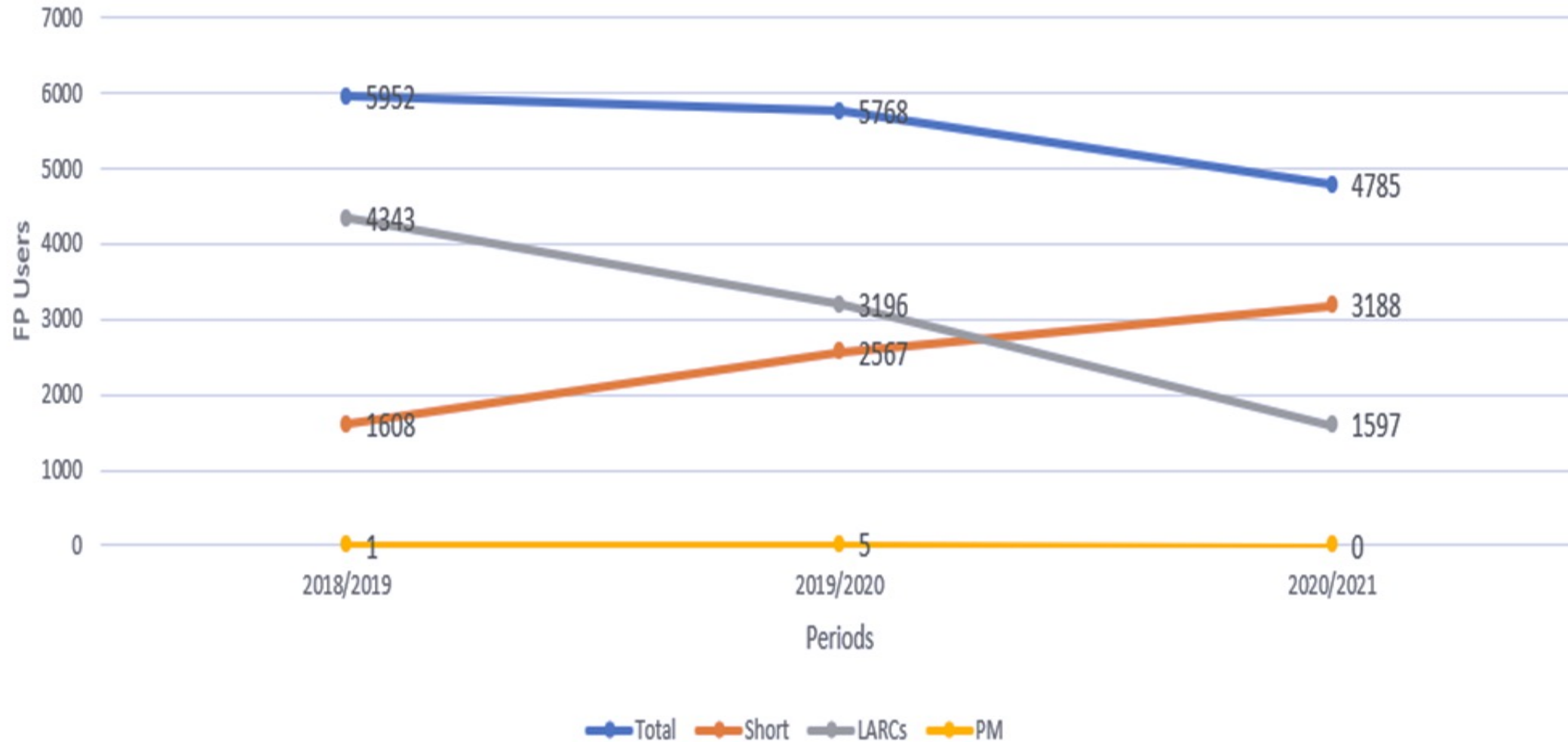
2

Strengthened community level activities

4

Year-on-year increase in allocation towards FP service delivery

Busia FP Client Volume Trends



Busia District
Graduation
Ceremony




Tupange
for
Better Cities

ing U
ly t
ation
ciurbanhealth


**CHALLENGE
INITIATIVE**
MCA




**Family
Planning
Services**


**FREE!
SERVICES**

**All are
Welcome!**

*Come for family
planning and other
health services*

- Counseling on family
planning services
- Contraceptive services
- HIV counseling & testing
- Clinical breast screening
- Blood glucose screening
- Diabetes check-ups
- Child immunizations





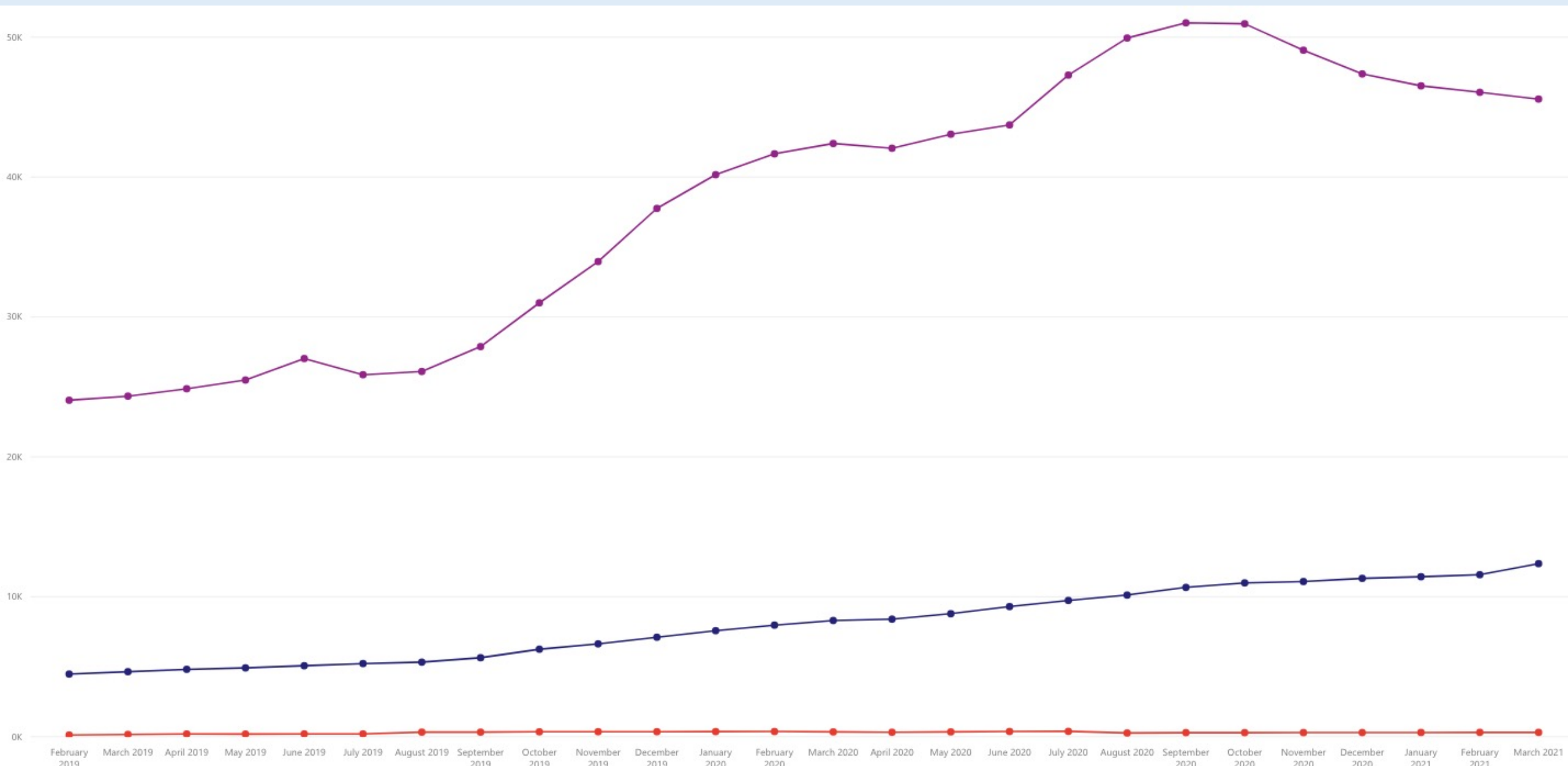
Ubungo Municipal - Tanzania

Ubungo Municipal graduated from TCI this year.
Key achievements since joining TCI include:

- Institutionalization of TCI's proven interventions into the Comprehensive Council Health Plan (CCHP)
- Advocacy with council and community leaders
- Strengthening provider capacity on post-partum family
- Increase in mCPR from 16.2% to 62.6%
- Reduction of teenage pregnancy by 17.3%



Ubungo Municipal FP Client Volume Trends



Kericho - Kenya

Emily Cheres, the Reproductive Health Coordinator (RHC) of Kericho county, explains how this is possible without TCI's direct support:

"We have incorporated what we used to do with TCI in our annual work plans, including in-reaches, outreaches, whole site orientation, onsite mentorship and applying some of these approaches in other health programs."



Kericho Sustained Impact

RAISE Round 1	RAISE Round 2	RAISE Round 3	RAISE Round 4	Key areas contributing to increase	Coaching activities contributing to increases	% change in client volume (baseline – Mar 2021)
49%	71% (+44.9%)	74% (+4.2%)	76% (+2.7%)	Improved quality/ frequency of coaching, financial spending and use of data for decision-making; documentation	<ul style="list-style-type: none"> • Intensified coaching on FP/AYSRRH program management through PIT with clear roles and responsibilities shared among implementers at various levels • Regular feedback on action items with top leadership and other sector players • Coaching on and strengthening of financial management and expenditure tracking 	97% increase

Uasin Gishu - Kenya

Achievements include:

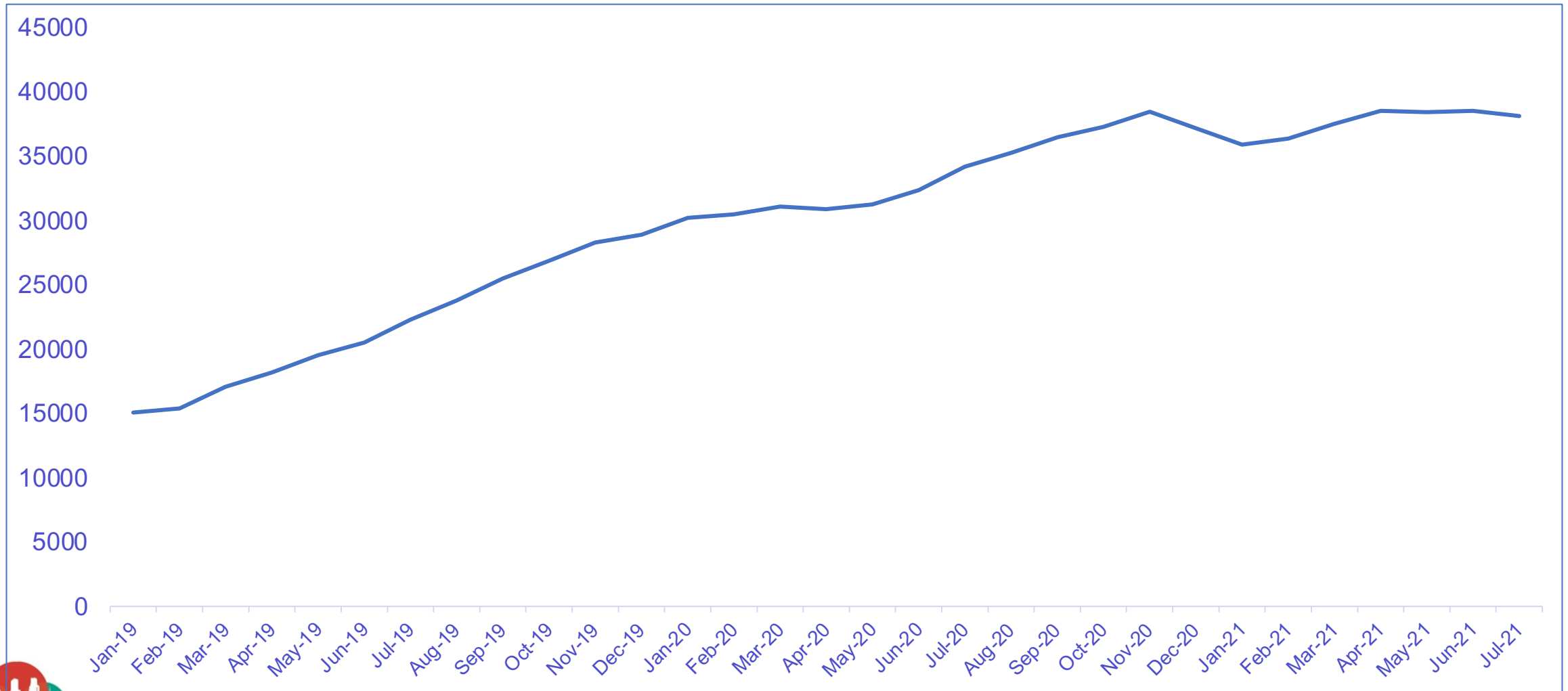
- Transition to alternative funding for implementation of adapted family planning interventions
- Incorporation of family planning and adolescent and youth sexual reproductive health interventions within the Reproductive, Maternal, Neonatal, Child and Adolescent Health budget
- Financial tracking of family planning resources
- Collaboration with implementing partners to address teen pregnancy challenges
- Domestication of the Reflection and Action to Improve Self-reliance and Effectiveness (RAISE) tool to other health programs



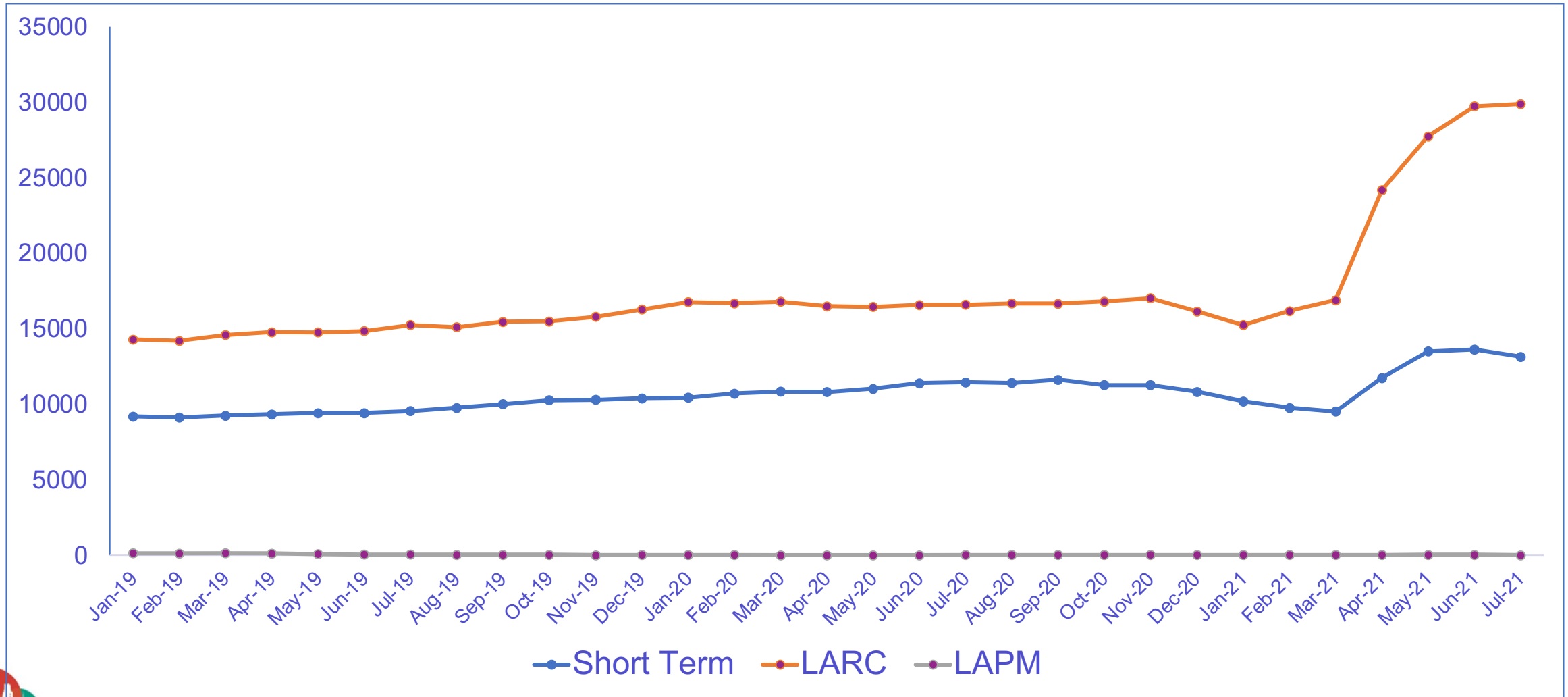
"We are happy to be on Graduation. This is an achievement. As management, we appreciate the work done in FP/AYSRH. We have not reached where we are supposed to be but we have started the journey ---- it is our mandate to ensure sustainability.....even though we have improved; we need to interrogate the data to ensure continuous improvement..... the County leadership is there to provide support"

Evelyn Rotich –County Executive Member of Health – Uasin Gishu County

Uasin Gishu Sustained Impact - Additional Users



Uasin Gishu Sustained Impact - FP Client Volume Trend





Lessons:

- Early communication on the TCI graduation strategy with all teams is critical
- Institutionalize high impact interventions in tangible ways, e.g., through the annual local government budgets
- Invest during pre-graduation in building great partnerships with other stakeholders and partners for continuity
- Develop graduation champions that you can rely on and build on their skills

Challenges:

- Packaging/communicating the graduation agenda
- Aligning activities for a graduated geography, i.e., what minimum technical support assistance is required to ensure gains are sustained

Questions???





**Thank
You**