



## Community Health Workers (CHW) Urban Accredited Social Health Activist\*

Series-version 2.0

### Why use this practice?

# Community Level Care Providers Link the Urban Poor to Desired Family Planning Services

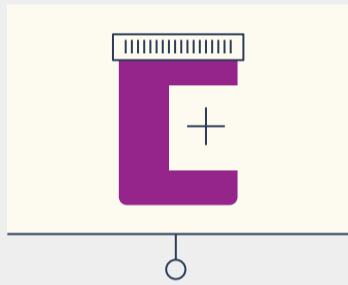
CHW/Urban Accredited Social Health Activists (ASHAs) are an important link between their communities and the health system. They are well accepted in promoting family planning (FP) and other health services in their communities. Evidence shows that women who are counseled by ASHAs are significantly more likely to become FP users.



#### STEP 1

### On Board ASHAs and Allocate the Catchment Area

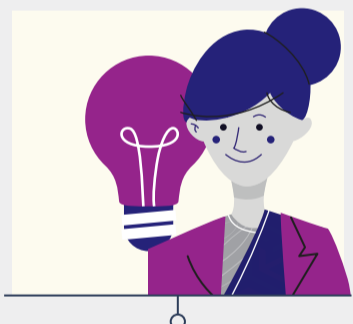
Refer to the latest mapping and listing data and ensure adequate numbers of ASHAs are on board as per population. Define their catchment areas and coach them. If adequate numbers of ASHAs are not on board, raise a request in the Program Implementation Plan (PIP) cycle or additional PIP cycle.



#### STEP 2

### In-depth training on FP

Provide a two-day in-depth training for ASHAs, specifically on updating population register, modern contraceptive methods, informed choice counseling, use of FP job aids, prioritization of family planning clients by age and parity, creating gender awareness, referring client to FDS and UHND, FPLMIS indenting, available incentives as per government guidelines, follow-up with FP users, distribution of OCP and condoms during household visits and preparedness for emergencies.



#### STEP 3

### Coach ASHA Supervisor Auxiliary Nurse Midwife

Coach ANMs to provide continuous on-the-job mentoring and supportive supervision to assist the ASHAs in translating the training into practice, reviewing the eligible couple list, demonstrating the use of job aid and providing informed choice, and supporting ASHAs in documentation work related to ASHA register/UHIR, vouchers.



#### STEP 4

### Establish ASHA and ANM Meeting as a Coaching and Mentoring Platform

Use the ASHA and ANM meeting platform to review, motivate, and coach ASHAs and ANMs on a regular basis. Check ASHA register/UHIR, document work, assist underperforming ASHAs, and encourage ASHAs to share positive and challenging experiences during ASHA and ANM review meetings.



#### STEP 5

### Recognition

Provide timely release of family planning incentives as per government guidelines, recognize and reward ASHAs who perform well, helping to continue to motivate them and prevent drop-outs.